

## Rajasthan govt sanctions over Rs 860 crore for inclusion of milk in mid-day meals



The Rajasthan government on Tuesday sanctioned Rs 864 crore for daily inclusion of milk in mid-day meals to school students up to Class 8 across the state. At present, sweetened-hot milk is served twice a week in government schools under the 'Mukhyamantri Bal Gopal Yojana', launched on November 29, 2022. To further boost the nutritional value of the daily mid-day meals, milk will now be provided during the remaining four days as well for all students of classes 1 to 8, an official statement said.

The scheme, announced by Rajasthan Chief Minister Ashok Gehlot in the 2023-24 state budget, will be started in government schools, madrassas and special training centres to ensure that students opting for mid-day meals are provided milk as well.

According to the statement, Gehlot has approved a budget provision of Rs 864 crore for daily inclusion of milk in mid-day meals.

## Assam to launch its own dairy brand



GUWAHATI: To improve quality control and boost incentives for milk farmers, Assam is planning to launch a single brand name for milk, like to Gujarat's 'Amul' and Karnataka's Nandini'. Chief Minister Himanta Biswa Sarma made the statement on the eve of the competition of two years with him in power in the state. Speaking to the media, Sarma stated that the state government would pay an additional 5Rs per litre of milk sold to daily cooperatives over market rates. The procedure will reportedly begin on June 1, 2023.

This action is intended to incentivise milk farmers around the state and increase milk production. Furthermore, to maintain quality control, all milk produced in the state will be sold under a single brand name. This will not only increase milk quality but will also establish a strong brand for Assam's dairy industry

## Say cheese: 45% rise in milk production in Tamil Nadu in last 10 years



Milk production rose 45% over the past decade in Tamil Nadu, with the number of milch cows also rising 12%. Tamil Nadu's ecosystem allows private players to thrive unlike some states where the cooperative federations have a monopoly.

According to the National Dairy Development Board, the volume of milk production in the state has increased from nearly seven million tonnes in 2011-12 to more than 10 million tonnes in 2021-22. Data sourced from the TN animal husbandry department states that the cows stood at 45 lakh in 2019, an increase from around 40 lakh in 2012.

Basic Animal Husbandry Statistics 2022' released by the Union ministry of fisheries, animal husbandry and dairying show that Tamil Nadu accounts for just 4.5% of the total milk production in the country. It was 11th among the top 15 major milk producing states in 2021-22.



## Agri and Allied Sectors' Crop Share Drop by 7.5 Percentage Point in Last 10 Years, NSO Reports



In the previous ten years, the proportion of crops in the gross value of agriculture and related industries' production has decreased by 7.5 percentage points. In the previous ten years, the proportion of crops in the gross value of agriculture and related industries' production has decreased by 7.5 percentage points, , whereas during the same period, the livestock's share has risen by 5 percentage points, a report released by the National Statistical Office (NSO) displayed these facts.

According to the National Statistical Office's report on the State-wise and item-wise value of output from agriculture, forestry, and fishing, the crops sub-sector accounted for 62.4% of the agricultural and allied sectors in 2011-12 but would account for just 54.9% in 2020-21. The livestock subsector's contribution to the agricultural and related sectors has risen from 25.57 percent in 2011-21 to 30.58 percent in 2020-21.

Crops, livestock, forestry & logging, fishing & aquaculture, and other linked industries are the four sub-sectors that make up the agricultural and allied sectors. The proportion of forestry, logging, fishing, and aquaculture has also somewhat grown. While the contribution of fishing and aquaculture went up from 4.19 percent to 6.08 percent throughout this time, the proportion of forestry and logging increased from 7.8 to 8.42 percent from 2011-12 to 20-21.

The report states that the agriculture, forestry, and fishing sectors' gross value of output (at constant prices for 2011-12), excluding irrigation, was Rs 26.12 lakh in 2020-21, compared to Rs 19.08 lakh crore in 2011-12. Three states that made the maximum contribution in the gross value of the agricultural, forestry, and fisheries industry in the nation in 2020-21 were Rajasthan (Rs 2.36 lakh crores), Maharashtra (Rs 2.46 lakh crores), and Uttar Pradesh (Rs 3.11 lakh crores).

## Telangana Govt to Soon Launch Agriculture Data Exchange to Boost Research & Innovation

Researchers and technology companies observed that data availability was a limiting factor for developing agriculture technology solutions. This limitation encompassed different aspects such as large-scale produce, rainfall, water facilities, farmers' information, and demographic data. The Telangana government is partnering with the World Economic Forum (WEF) and the Indian Institute of Science (IISc), Bengaluru, to launch an Agriculture Data Exchange (ADEx) platform that utilizes artificial intelligence (AI) technology



The platform aims to make agriculture data easily accessible and transparent, which will provide an impetus to research and innovation in the sector. Rama Devi Lanka, director of emerging technologies, spoke about the challenges faced when developing technology solutions for farmers. The decision has been made to consolidate data from various agriculture information providers (AIPs) and make it available on a single platform. This will help overcome the challenge of data availability. Data is available from various sources, including government departments, agricultural and horticulture academic institutions, and research centers.

The ADEx platform is expected to transform the agriculture sector in Telangana by providing a one-stop shop for all agriculture data needs. The platform's use of AI technology will also help ensure that the data provided is accurate and up-to-date. With the availability of comprehensive data, farmers and other stakeholders in the agriculture sector will be able to make informed decisions. This will lead to increased productivity and efficiency, which will benefit the entire sector. The ADEx platform is a significant step towards achieving the Telangana government's goal of transforming agriculture through technological innovation



## No relief on milk price till Diwali: Indian Dairy Association president Rupinder Sodhi



Milk prices will remain elevated until Diwali but might soften later once the flush season starts and feed prices decline, Indian Dairy Association president Rupinder Singh Sodhi said.

Milk prices have shot up 13-15% in the past 15 months amid a global rise in cereal prices. Production suffered due to insufficient fodder following unseasonal rains, and a decline in the number of lactating cattle in a lag effect of fewer artificial inseminations during the pandemic.

The trade enters the flush season from October to February when cattle produce more milk naturally and dairy companies typically lower their procurement price.

Sodhi, former managing director of Amul dairy cooperative, said in an interview that to ensure adequate availability of milk at reasonable prices in the coming two years, farmers will have to be given remunerative prices. He said the extended cold season till May and erratic rainfall in the past two months will help increase milk production by 5%, despite the normal 15% dip in production during summers.

India's milk production is set to rise to 628 million tonnes in the next 25 years from the present 222 MT, said Sodhi, who is also an advisor to Reliance Retail Ventures. In GDP of agriculture, the contribution of cereals was 37% five decades ago, now it is 17%. The share of milk has increased to 24% from 10%, meat to 8% from 1.6%, eggs to 1.2% from 0.5%.

When prosperity comes over the years, consumers upgrade themselves from carbohydrate-rich food to protein and fat-contained diet from animal source. Whether it is milk or poultry or meat, the reason is simple: they are tastier, nutritionally dense because of their high protein content, and affordable.

## WestBridge Capital in final leg to acquire stake in dairy products brand Milky Mist

A deal to buy a minority stake in the dairy products company Milky Mist, which is based in Tamil Nadu, is close to being finalised by India-focused investment fund WestBridge Capital, which supports both private and public market companies.

The report said the investment is likely to be about Rs 800 crore and will value Milky Mist Dairy Food at about Rs 7,000 crore. "The negotiations which were on since last year are now through, and WestBridge is closing in on all the last bits of formalities.

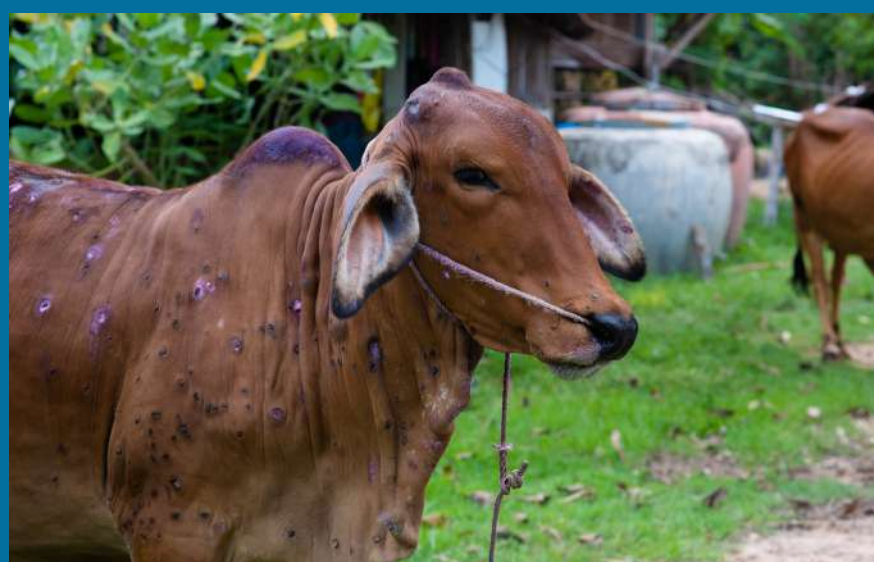


It has exclusivity on the deal, and in another few weeks, the financing will be made official," In order to raise money, Milky Mist has previously had negotiations with private equity and venture capital firms. These discussions, however, were unsuccessful. The business has never previously raised money from institutions.

"We are exploring fundraising and are in talks with multiple companies but have not yet finalised any particular suitor," quoted K Rathnam, chief executive officer at Milky Mist



## Lumpy skin disease spreads in Uttarakhand; 38 bovine death cases reported so far



The disease is characterized by fever, enlarged superficial lymph nodes and multiple nodules on the skin and mucous membranes. The Lumpy Skin Disease (LSD) in the bovine population has claimed the lives of 38 bovines since May 5 while six deaths have been reported on Wednesday, said the animal husbandry department officials in Uttarakhand. According to the animal health bulletin released by the animal husbandry department, six animals died due to the disease while 383 animals were affected.

The number of recovered animals was 159 while 383 were treated with around 3,792 animals getting their vaccination on Wednesday

LSD is an infectious disease in cattle caused by a virus of the family Poxviridae, also known as Neethling virus. The disease is characterized by fever, enlarged superficial lymph nodes and multiple nodules on the skin and mucous membranes.

Saurabh Bahuguna, animal husbandry department minister said, “Over 3,514 cases have been detected 38 deaths in past ten days while the total number of active cases till Wednesday evening was at 1,648 and 1,828 animals showed recovery as the vaccination drive was conducted on 7,46,530 animals till Wednesday with case fatality rate (CFR) being at 1.08% while recovery rate stood at 52.02 %.”

Standard operating procedure (SOP) have been issued to control the spread of disease and have banned inter-district and state transportation of animals while all the leaves of the department officials and employees have been cancelled for one month,” said Bahuguna

## Bengaluru gets its first Milk ATM

Vinod Gunasekaran an MBA graduate from Mangalore University came up with the idea after he saw that people in cities were unable to source fresh milk through the day and has started the first Milk ATM in Bengaluru. Vinod Gunasekaran under his start-up V Dairy Ventures has rolled out Milk ATM (V-Paal), the concept is to provide fresh Milk 24x7 at the ATM.



The machine provides undiluted and unprocessed milk 24/7, and the demand has been strong. The machine accepts Rs 5 coins, Rs 10, Rs 20, Rs 50 and Rs 100 notes, and people can choose the amount of milk they want to buy. People can fill the milk in containers as per their requirement.

While other vending machines sell milk in packets, people fill Milk with their own utensils from this machine; the fresh cow milk is refilled every morning and in the evening. He took one year to study the market and added more features to the machine by which card system and recharging the cards in the machine was introduced. Presently the Milk ATM is installed in two apartments in Horamavu, Bengaluru. People can also get a special debit card to buy milk from the machine, these ‘debit cards’ are like prepaid cards, these RFID cards free of cost, customers can recharge the card and use the same to buy milk in this ATM. Vinod says more such ATM will be installed in future in and around Bengaluru and Karnataka.

## Who are we ?

“The Centre of Excellence for Dairy Skills in India (CEDSI)” an autonomous institution working under the aegis of the Agriculture Skill Council of India (ASCI) under the Ministry of Skill Development & Entrepreneurship, to help the empowerment and betterment of Livelihood of farmers, wage workers, and other stakeholders in the Dairy value chain.

CEDSI Membership will provide a unique platform for the industry leaders, policymakers, development practitioners, dairy scientists, researchers, students, and farmers to debate and discuss the issues of imminent importance to the dairy industry.



## Centre of Excellence for Dairy Skills in India

### Join Our Membership Drive and Get Benefits of

- |  |   |
|--|---|
| ✓ Platform to interact with other members in the sector                                  | ✓ Recognize your organization with CEDSI Yearly Awards and Recognition                          |
| ✓ Networking opportunities with corporate leaders and government authorities             | ✓ Chance to reach across the board through advertising in our press releases, news and articles |
| ✓ Special costs of training in Skill India Certified Programmes                          | ✓ Consultative and advisory services to help members  |
| ✓ Access to our Journal and Publications   | ✓ Consulting and advisory services to help members  |
| ✓ Expert advice in day-to-day operations and management of livestock /farm productions   | ✓ Periodic e-newsletter for the latest news, govt. announcement and schemes in dairy sectors    |
| ✓ Free registration on the job portal and regular updates on job vacancies in the sector | ✓ Updates on training programs of CEDSI and access to the training calendar                     |

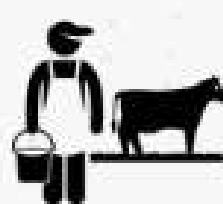
### Who Can Become a Member -



**Corporates/  
Cooperatives**



**NGO's/CSR  
Foundations**



**Dairy Farmers**



**Students**



**Professional**

[www.cedsi.in](http://www.cedsi.in)

@cedsi\_india

